

**DANGER**  
KEEP OUT OF REACH OF CHILDREN

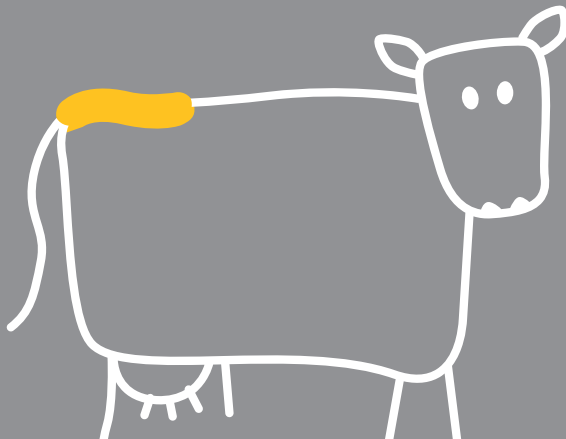


► MARKERS

# DETAIL



**Water based fluorescent tail paint**  
For detection of oestrus activity



NET CONTENTS 10 LITRES

STIR WELL BEFORE USE

## ► MARKERS

# DETAIL

**Water based fluorescent tail paint**  
For detection of oestrus activity

## DIRECTIONS FOR USE

Ensure animals are clean and dry before painting. Remove any loose hair. Apply a strip of paint 15cm long by 5cm wide forward along the spine from the tail head. Oestrus activity is indicated by the rubbing or removal of the paint patch.

Detail correctly applied will last up to 21 days on cows that have not cycled, depending on conditions. Cows which are penned or in close confinement may need to be touched up every 7-10 days. In the event this product freezes, thaw naturally at room temperature no higher than 20°C / 68°F.

PRODUCT CONTAINS BITTERING AGENT

BARCODE

RHA1474

SCAN FOR PRODUCT INFORMATION



## HAZARD STATEMENTS

May damage fertility or the unborn child. May cause damage to organs through prolonged or repeated exposure.



Contains:  
<3% Di-butyl  
phthalate

## PREVENTION STATEMENTS

Read label and Safety Data Sheet before use. Use personal protective equipments as required. Do not breathe fumes/gas/mist/vapours/spray.

## RESPONSE STATEMENTS

If medical advice is needed, have product container or label at hand. IF exposed or concerned or if you feel unwell: Get medical advice.

## STORAGE STATEMENTS

Store locked up.

## DISPOSAL STATEMENTS

Dispose of product or empty containers safely in accordance with local regulations. Avoid contamination of any water supply with product or empty container.