

**DANGER**  
KEEP OUT OF REACH OF CHILDREN



# UDDER MARK

Highly visible  
animal marker

To indicate cows with  
colostrum milk or  
potential udder infection



NET 363 g / 500 mL Shake well before use



## UDDER MARK

Highly visible  
animal marker

To indicate cows with  
colostrum milk or potential  
udder infection

### DIRECTIONS FOR USE

Udder Mark is manufactured with a 360° valve for ease of application. Udder Mark is formulated to last on the udder for up to 8 days. However to ensure continued visibility it may need to be touched up periodically. Udder Mark's low irritancy formulation ensures there is no discomfort to the treated animal. **Shake can well before use.** Ensure udders are clean and dry before applying. Hold can approximately 15cm from the udder ensuring tail is clear of area to be sprayed. Apply Udder Mark BLUE to identify cows with potential udder infection that requires monitoring or cows with colostrum milk. Colostrum milk must be withheld from the vat for at least eight milkings.



BARCODE



PROPELLANT: Hydrocarbon

### HAZARD

Extremely flammable aerosol. Pressurized container: may burst if heated. Causes skin irritation. Toxic to aquatic life with long lasting effects.

### PREVENTION

Keep out of reach of children. Read label before use. Keep away from heat, hot surfaces, sparks, open flames and other ignition sources. No smoking. Do not spray on an open flame or other ignition source. Do not pierce or burn, even after use. Avoid release to the environment. Beware: Deliberately sniffing or inhaling concentrated contents can be harmful or fatal. Wear protective gloves and protective clothing. Wash all exposed external body areas thoroughly after handling.

### RESPONSE

If medical advice is needed, have product container or label at hand. Collect spillage. If on skin: Wash with plenty of water and soap. If skin irritation occurs: Get medical advice/attention. Take off contaminated clothing and wash it before reuse.

**24 HOUR EMERGENCY RESPONSE (CHEMCALL)**  
NZ: 0800 243 622, AU: 1800 127 406.

### STORAGE & DISPOSAL

Protect from sunlight. Do not expose to temperatures exceeding 50°C. Recycle empty cans if facility is available or place in household rubbish.

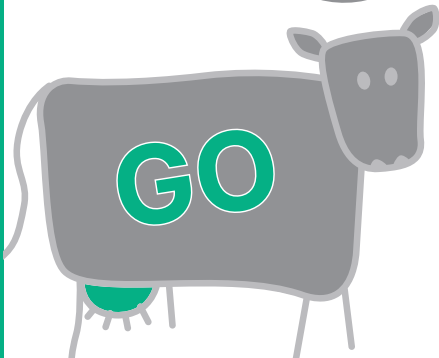
**DANGER**  
KEEP OUT OF REACH OF CHILDREN



# UDDER MARK

Highly visible  
animal marker

To indicate cows that  
have completed their milk  
withholding period



## UDDER MARK

Highly visible  
animal marker

To indicate cows that  
have completed their  
milk withholding period

### DIRECTIONS FOR USE

Udder Mark is manufactured with a 360° valve for ease of application. Udder Mark is formulated to last on the udder for up to 8 days. However to ensure continued visibility it may need to be touched up periodically. Udder Mark's low irritancy formulation ensures there is no discomfort to the treated animal. **Shake can well before use.** Ensure udders are clean and dry before applying. Hold can approximately 15cm from the udder ensuring tail is clear of area to be sprayed. Apply Udder Mark RED to cows treated with antibiotics. Over spray Udder Mark GREEN when the cow has reached the recommended withholding period and milk is clear to return to the silo.

BARCODE



PROPELLANT: Hydrocarbon

### HAZARD

Extremely flammable aerosol. Pressurized container: may burst if heated. Causes skin irritation. Toxic to aquatic life with long lasting effects.

### PREVENTION

Keep out of reach of children. Read label before use. Keep away from heat, hot surfaces, sparks, open flames and other ignition sources. No smoking. Do not spray on an open flame or other ignition source. Do not pierce or burn, even after use. Avoid release to the environment. Beware: Deliberately sniffing or inhaling concentrated contents can be harmful or fatal. Wear protective gloves and protective clothing. Wash all exposed external body areas thoroughly after handling.

### RESPONSE

If medical advice is needed, have product container or label at hand. Collect spillage. If on skin: Wash with plenty of water and soap. If skin irritation occurs: Get medical advice/attention. Take off contaminated clothing and wash it before reuse.

**24 HOUR EMERGENCY RESPONSE (CHEMCALL)**  
NZ: 0800 243 622, AU: 1800 127 406.

### STORAGE & DISPOSAL

Protect from sunlight. Do not expose to temperatures exceeding 50°C. Recycle empty cans if facility is available or place in household rubbish.

NET 351 g / 500 mL Shake well before use

Manufactured for Farmers Industries (NZ) Ltd, 72 Portside Drive, Mt Maunganui, New Zealand. FIL is a wholly owned subsidiary of GEA New Zealand  
TEL +64 7 575 2162 FREEPHONE NZ 0508 434 569 FIL.CO.NZ

**DANGER**  
KEEP OUT OF REACH OF CHILDREN



# UDDER MARK

Highly visible  
animal marker

To indicate cows  
that require a milk  
withholding period



## UDDER MARK

Highly visible  
animal marker

To indicate cows  
that require a milk  
withholding period

### DIRECTIONS FOR USE

Udder Mark is manufactured with a 360° valve for ease of application. Udder Mark is formulated to last on the udder for up to 8 days. However to ensure continued visibility it may need to be touched up periodically. Udder Mark's low irritancy formulation ensures there is no discomfort to the treated animal. **Shake can well before use.** Ensure udders are clean and dry before applying. Hold can approximately 15cm from the udder ensuring tail is clear of area to be sprayed. Apply Udder Mark RED to cows treated with antibiotics. Over spray Udder Mark GREEN when the cow has reached the recommended withholding period and milk is clear to return to the silo.

BARCODE



PROPELLANT: Hydrocarbon

### HAZARD

Extremely flammable aerosol. Pressurized container: may burst if heated. Causes skin irritation. Toxic to aquatic life with long lasting effects.

### PREVENTION

Keep out of reach of children. Read label before use. Keep away from heat, hot surfaces, sparks, open flames and other ignition sources. No smoking. Do not spray on an open flame or other ignition source. Do not pierce or burn, even after use. Avoid release to the environment. Beware: Deliberately sniffing or inhaling concentrated contents can be harmful or fatal. Wear protective gloves and protective clothing. Wash all exposed external body areas thoroughly after handling.

### RESPONSE

If medical advice is needed, have product container or label at hand. Collect spillage. If on skin: Wash with plenty of water and soap. If skin irritation occurs: Get medical advice/attention. Take off contaminated clothing and wash it before reuse.

**24 HOUR EMERGENCY RESPONSE (CHEMCALL)**  
NZ: 0800 243 622, AU: 1800 127 406.

### STORAGE & DISPOSAL

Protect from sunlight. Do not expose to temperatures exceeding 50°C. Recycle empty cans if facility is available or place in household rubbish.

NET 351 g / 500 mL Shake well before use

Manufactured for Farmers Industries (NZ) Ltd, 72 Portside Drive, Mt Maunganui, New Zealand. FIL is a wholly owned subsidiary of GEA New Zealand  
TEL +64 7 575 2162 FREEPHONE NZ 0508 434 569 FIL.CO.NZ